



Fact Sheet

Turn Your Discovery Data into SAM Strategy

USU Software Asset Management

Complete inventory for cloud, data center and desktops

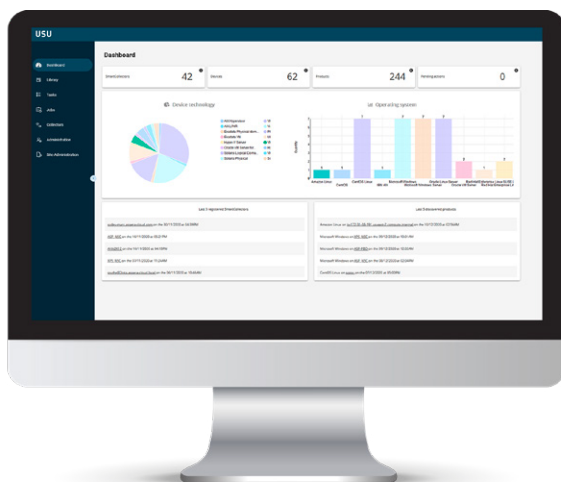
From data center to cloud services, USU Software Asset Management (formerly Aspera SmartCollect) gathers the essential data to calculate your software licenses. The solution collects, consolidates, and cleans your data into a single hub for your software management. See the big picture for software vendors such as Microsoft, Oracle and SAP, and cloud services like Azure, AWS and Oracle Cloud.

Built for flexible scalable integration

Your IT environment is constantly changing, so our solution is built to be flexible. USU Software Asset Management knows what data collection is essential for managing your software licenses, now and in the future. The solution sets up and monitors connections to all sources, managing their data quality and handling every transformation.

Maximize your contracts & cloud subscriptions

- A single hub for all data gathering and management
- Connectors for on-premises and cloud resources
- Customizable inventory reports you can rely on
- Automatic data normalization for high-quality results
- Full inventory for complete IT environment, including IoT



Collect, clean and calculate inventory

The USU discovery solution runs deep data collection from physical and virtual devices across your entire network. It gathers details about product installations, operating systems, running services and hardware assets. And it's integrated with our license management capabilities, so you can quickly calculate the software and cloud services you need.



3,500+ kinds of devices

Covers network stations, virtual servers, desktops, laptops, and hardware assets such as printers, scanners, and audio devices.



7,500+ software assets

Gathers important details about your servers and software such as installations, versions, editions, and usage.



Unlimited software vendors

Collects data about every vendor such as Oracle, Microsoft, Azure, SAP, IBM, Adobe, Amazon AWS, and VMware.

Simplify and normalize your inventory data

Never doubt your data again. USU Software Asset Management cleans and normalizes your data, automatically removing duplicates, flagging inconsistencies, monitoring data flows, and ensuring that you have the most recent data. Get maximum reliability for the best license management results.

Top 10 benefits of data discovery

01 | Simple, fast data gathering

Automatically scans your network to discover devices and installed products, whether it's on 100 servers or 100,000 desktops.

02 | Get reports you can trust

Reporting is on-demand and customizable to ensure your data is up-to-date and complete, and you can spot inconsistencies.

03 | See everything in one place

Viewing your software data in a single Hub gives you a "source of truth" to help with business-driven decisions about your critical software resources.

04 | Ensure data consistency

Automatically consolidate and normalize your data to ensure it's accurate by comparing sources, removing duplicates, and flagging errors.

05 | Easily scales with your IT

Our data collection is designed and field-tested for big data centers and highly virtualized IT environments.

06 | Stay flexible and secure

Use both agents and remote technologies to get the best data coverage. Ensure data security by using agents as a single point of connection.

07 | Gather all cloud data

Ships with system connectors for your most important cloud platforms, SaaS tools, and infrastructure services.

08 | Shine a light on shadow IT

Connect to financial reporting solutions to find unmanaged cloud solutions hidden in your environment.

09 | Get complete server details

See your entire data center with details such as CPU configuration, RAM, metering, disk usage and virtualization details.

10 | Keep data up to date

Ensure that you have the most recent data with reports on the average age, number of inventoried devices, and whether the inventory is valid.